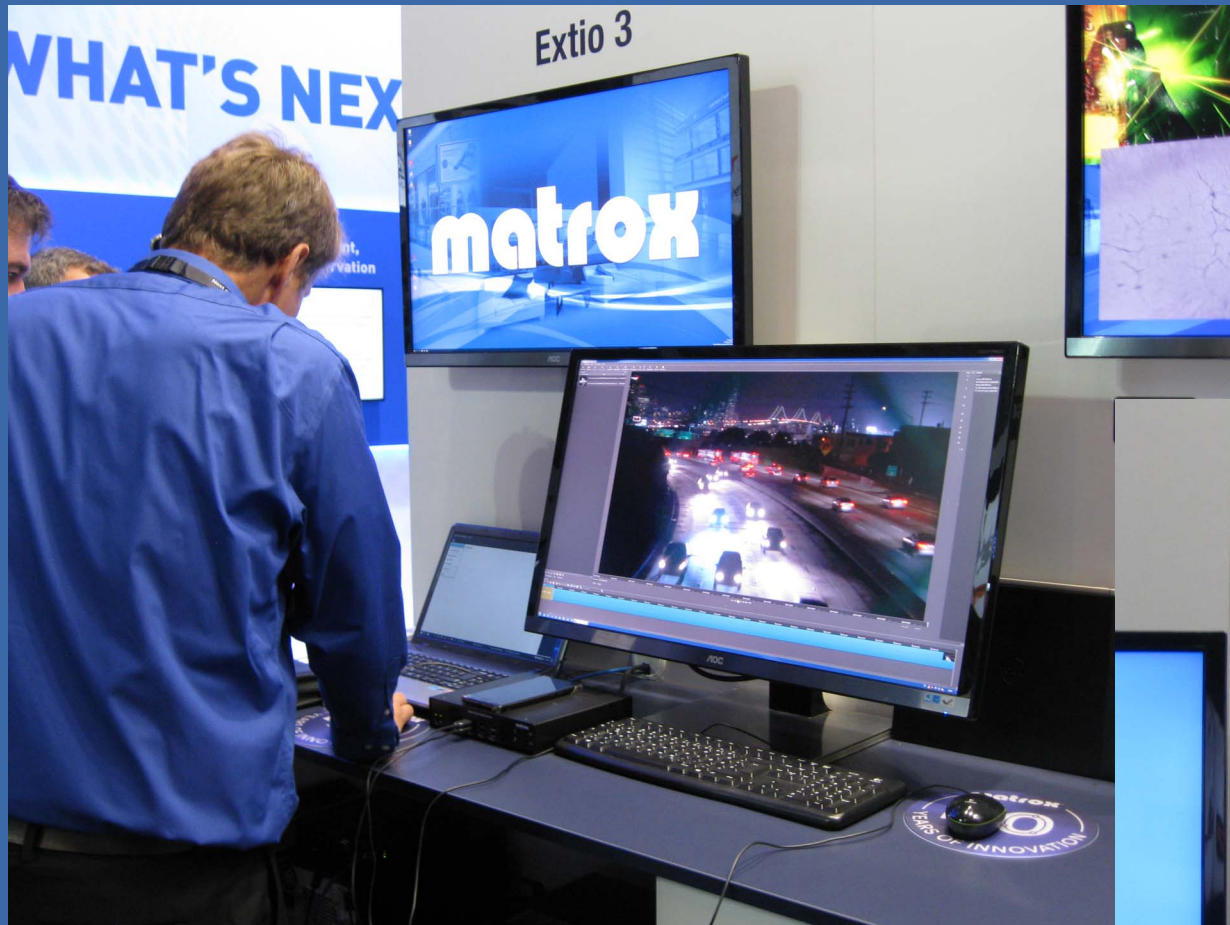


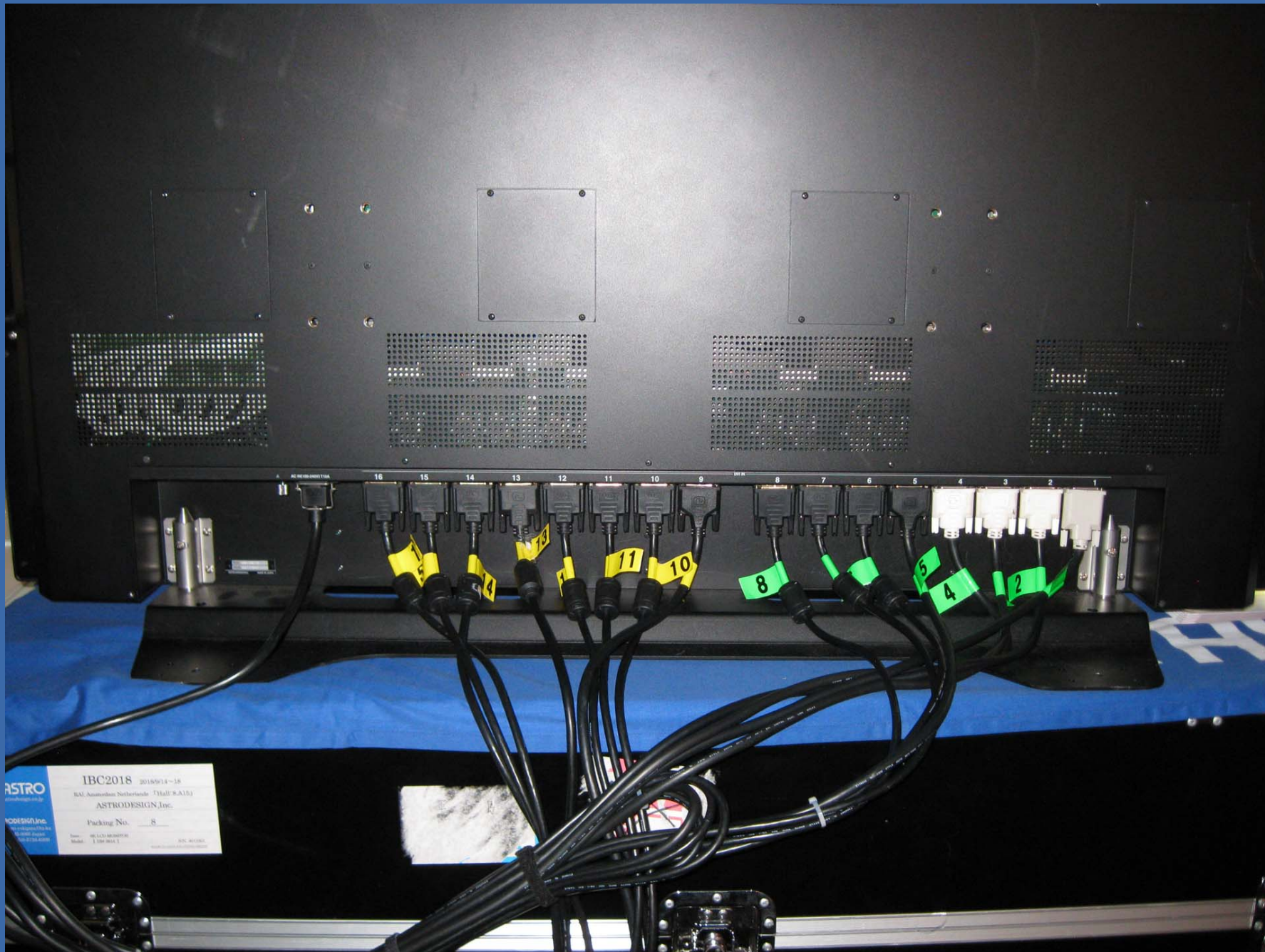


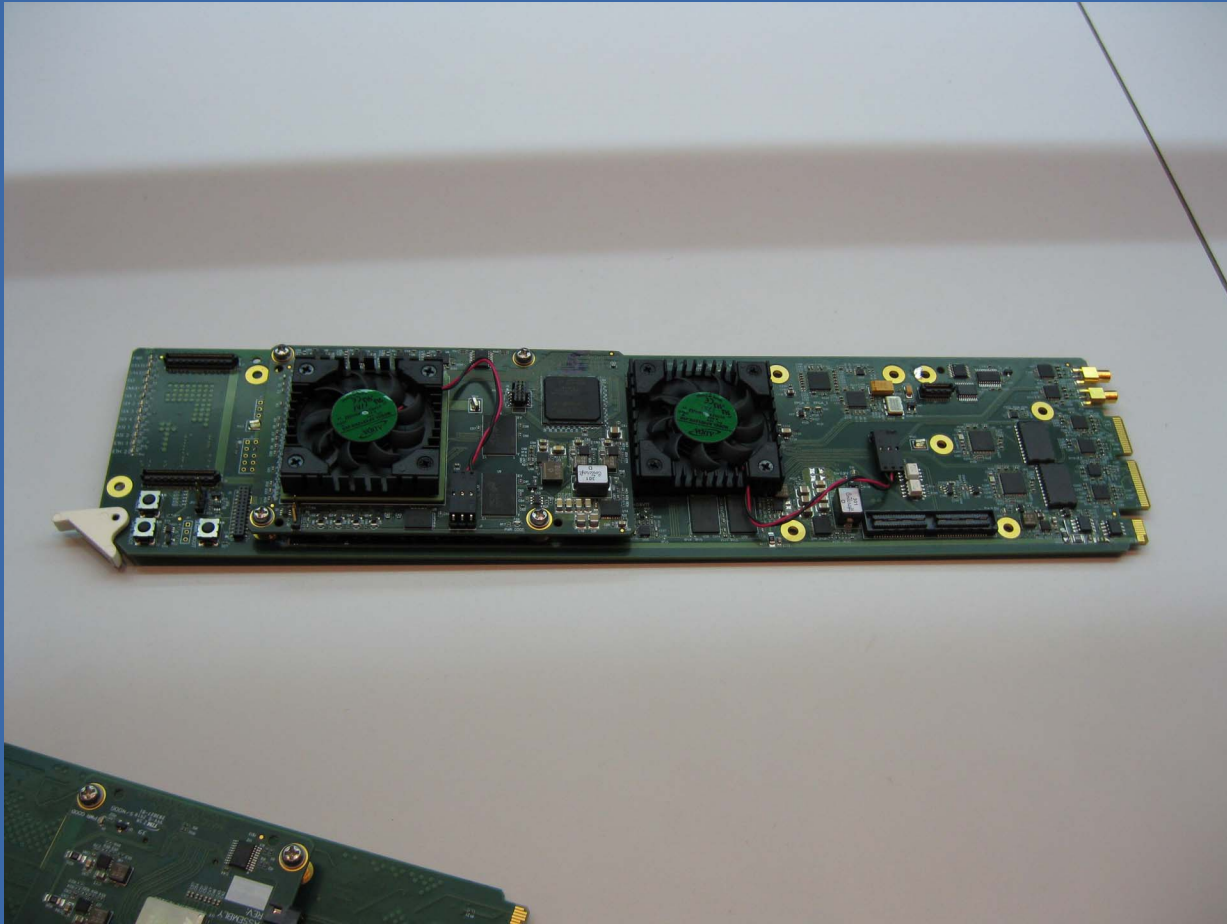
CONTENT VALUE PROTECTION
FROM ORIGIN TO CONSUMPTION
CONNECTING PEOPLE TO
THE CONTENT THEY LOVE
SOLUTIONS













2/4 HDMI/DVI & SDI Output Sets
Various Input Formats - Auto Detect
SDI models with Passive Input Loop
32 GPI - Tallies & Presets Recall
TSL Protocol over IP & Serial
Audio Meters, Markers, Alarms,
Clocks, Counters, Logos and more...
Option: VITC/ATC Decode & Display

Meters -
IBC 2018/09
Counter

emorionix Visit us at:
Hall 8, Stand B.37

CP-16

Di-16

MS-8-8#

th openGear
10
APANTAC

APANTAC MULTIVIEWER

TX# - 64x16 Modular Multiviewer - Extra Router Outputs

Based on the T# Design - Modular. Mix & Match Input Boards. Full Range of Multiviewer Features. 4RU

- Up to 64 inputs, 64 outputs - 16 are multiviewer outputs
- Up to four output cards equipped with 16 high density BNC each
- Each output card has four multiviewer outputs and twelve router outputs
- Each multiviewer output is fully independent from the others and can display up to 64 windows
- Any input can be sent to any multiviewer window or router output
- Up to 6 different (and configurable) window sizes can be displayed simultaneously on each output
- All the various T# input card models are also available for the TX#
- The TX# multiviewer outputs have the same capabilities as the T# multiviewer outputs including:
 - UMDs - Static and dynamic (TSL), Tallies - GPI and TSL, audio meters, markers, alarms, clocks, logos, etc.

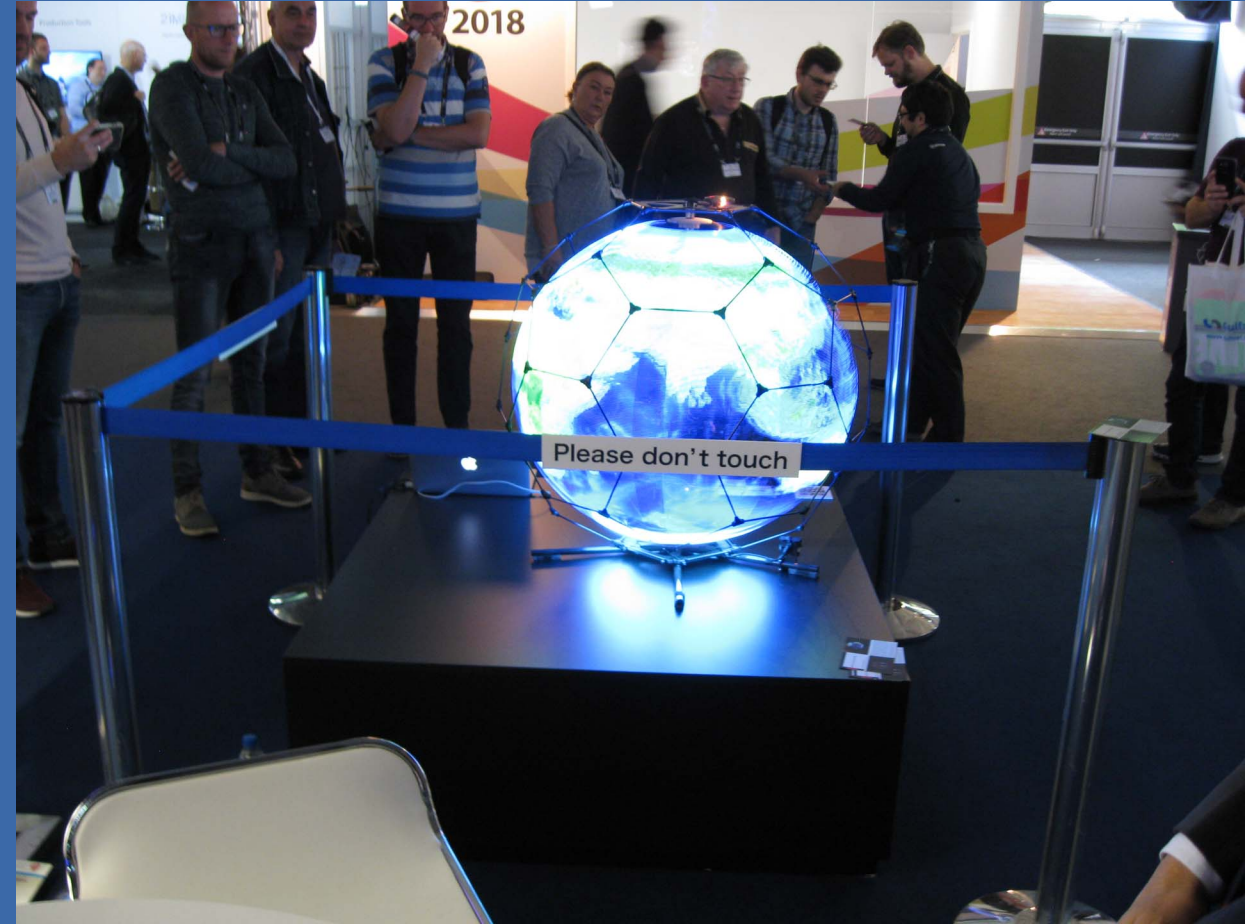
SEE MONITOR UNDER THIS SIGN:
Use the control panel in front of the TX# to select multiviewer outputs to the monitor

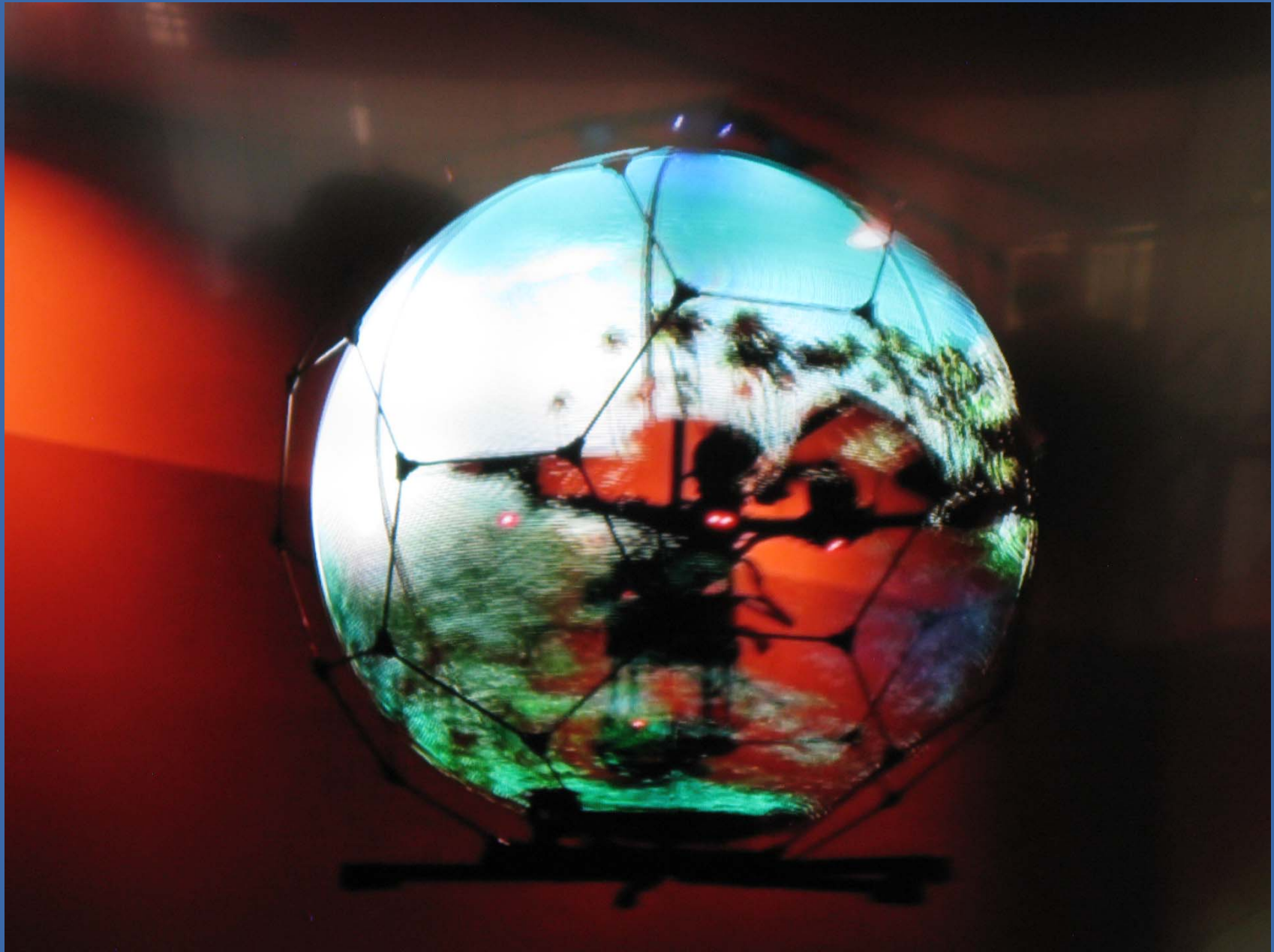
The last selection is a combined view of the 16x TX# multiviewer outputs using a Mi-16 multiviewer



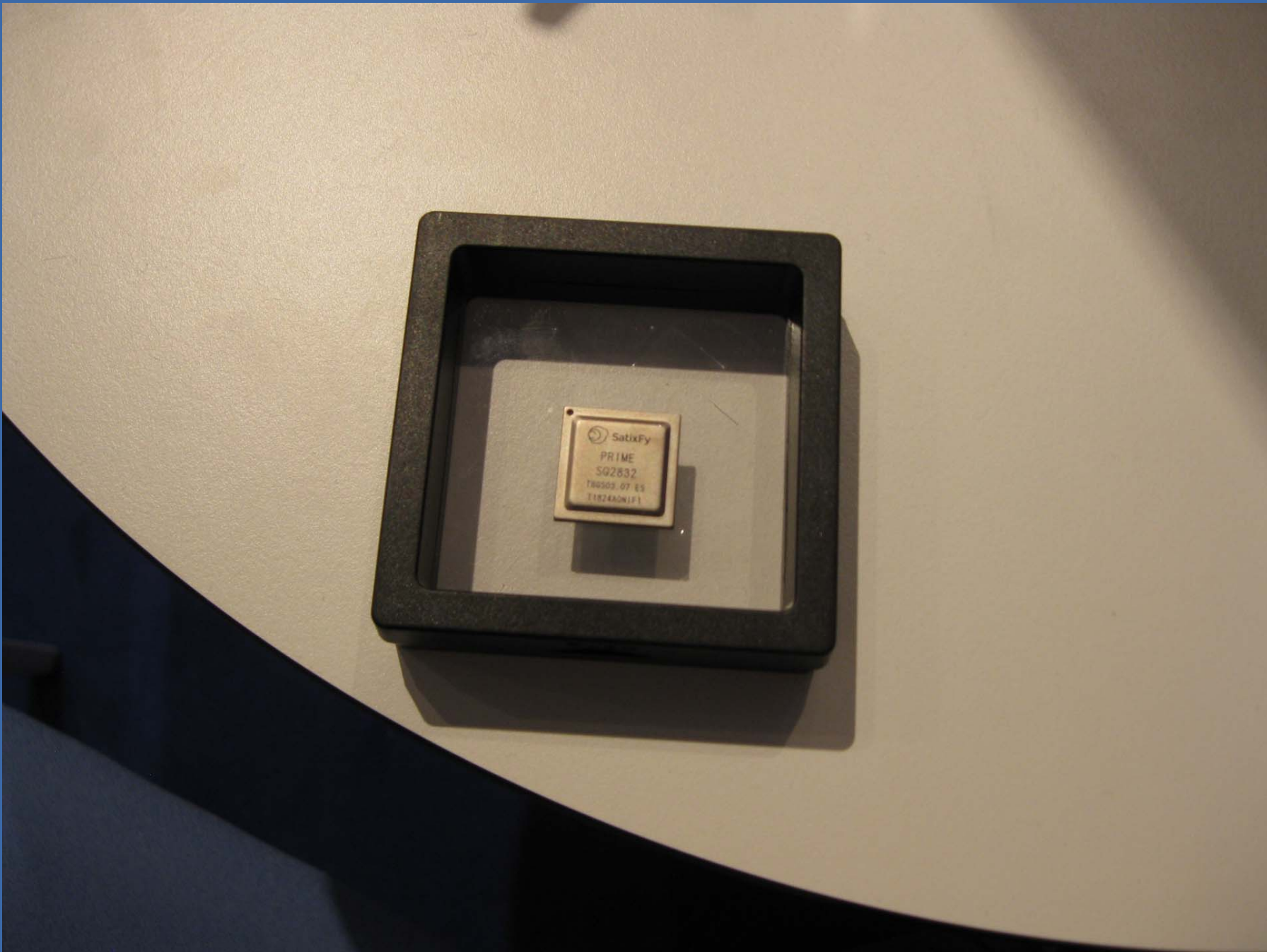
Director Monitor 4 - Program

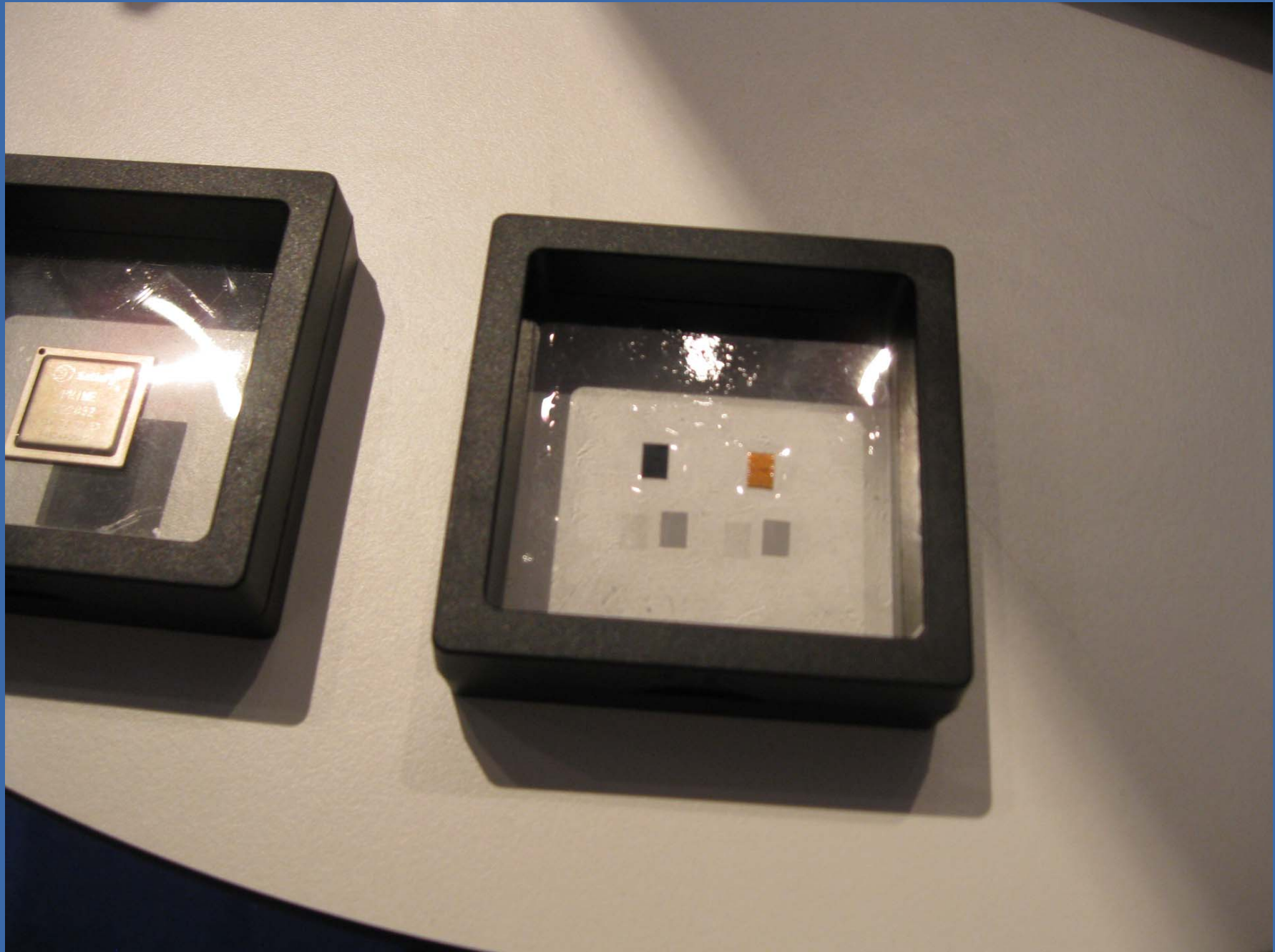










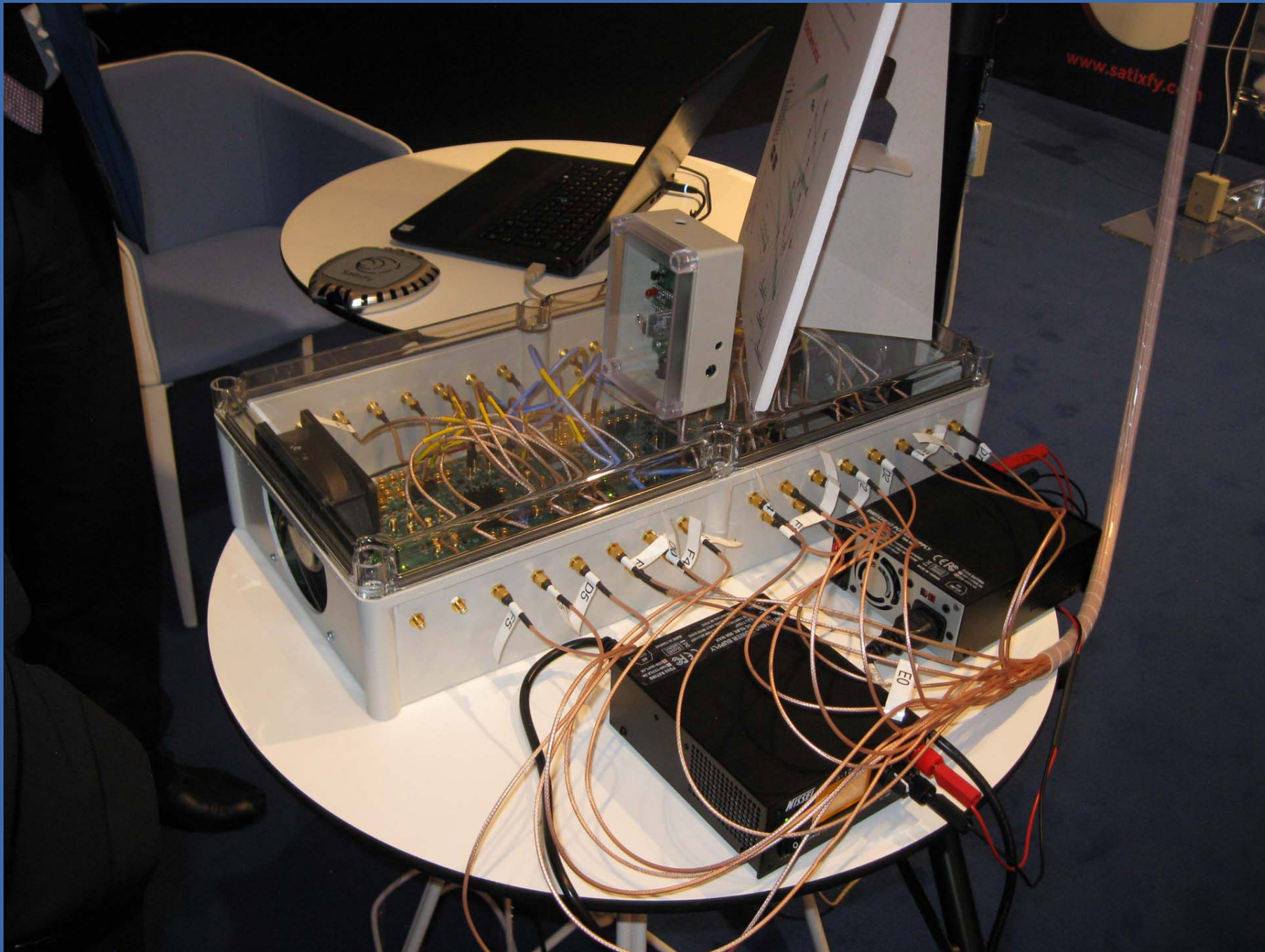




Aero Terminal

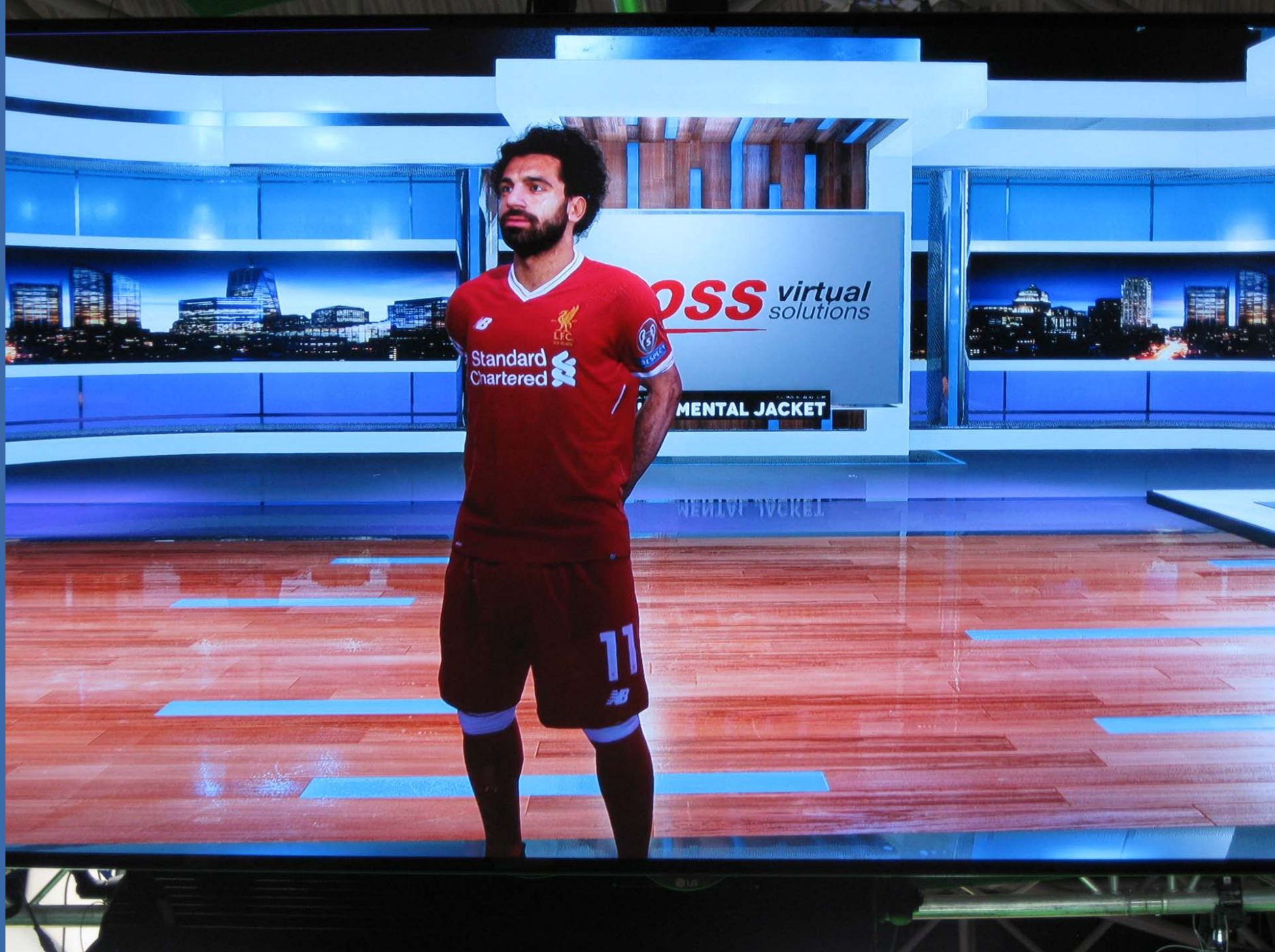
- Based on Satelity's Digital Beam Forming
- Electronic Beamwidth Control (EBWC)
- Architecture and Digital Beamforming ASIC
- Multi-Beam - Broadcast Service and TD
- High Reliability - Fully Digital Architecture
- Fully Java based Software Defined Radio (SDR)
- EUROCOMSEC compliant
- Supports Beam Mapping and Beam Switching
- Small form factor and easy installation enabled by low profile and low weight











CISCO Synamedia

Scalable Video Processing Workflows

Low-latency ABR with Smart Rate Control



Why Cisco vDCM Smart Rate Control?

- Adapt encoding bitrate to content complexity
- Scale with accuracy a user programmable
- Support for H.264 and H.265
- Insignificant delay impact
- Picture Quality monitoring retained - VQO
- Very low CPU cost and hence inexpensive

Live Video DevOps





Is Professional Media over IP for Real? 

Live use cases & interop of real-time professional media over IP
IBC16, NAB17, IBC17, SMPTE ATC 17, NAB18, SET expo 18, IBC18

 **IP SHOWCASE E106**
SMPTe ST 2110 BASED LIVE PRODUCTION
Presented in association with Broadcast East & Ryerson University

Come to the IBC 2018 IP Showcase
Room E106
50+ vendors!



35 Copyright 2018 MediaKind, Ericsson & IABM




RELIABLE INTERNET STREAM TRANSPORT

Merrick Ackermans - MVA Broadcast Consulting
Chair VSF RIST Activity Group.





Israel

VideoFlow



USA - CA

Cobalt



USA - CA

QVidium



United Kingdom

Nevion

RIST LIVE
RELIABLE INTERNET STREAM TRANSPORT Interop Demo
For IBC 2018

Receivers and Live Composite Stream
Provided by:

COBALT  **VSF**
VIDEO SERVICES FORUM

Receivers: 9990-DEC-MPEG
Location: Champaign, Illinois, USA



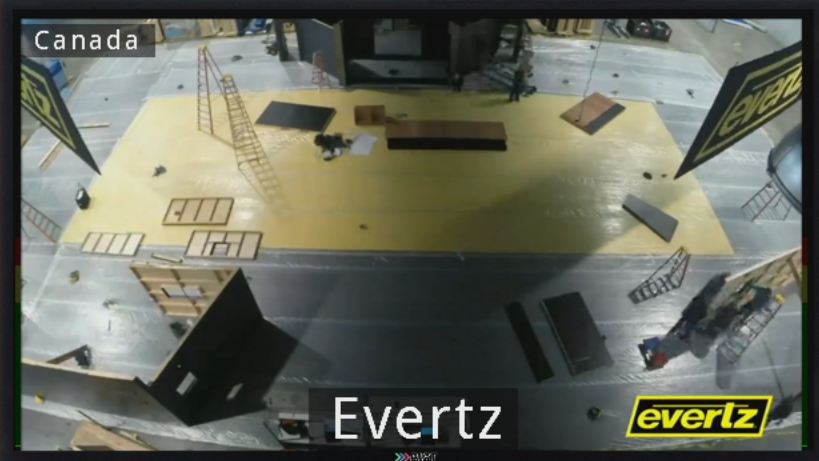
USA - VA

Zixi



USA - FL

DVEO



Canada

Evertz



USA - MA

Artel

RIST on display at IBC.

