

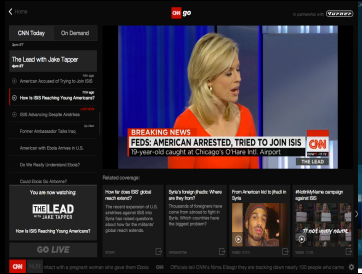


Keith Chandler

Vice President, Integration and Architecture, Video Platforms
and
Chief Architect, CNNgo

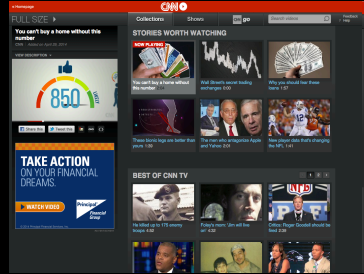
Turner Broadcasting System

CNN Digital Video Product Portfolio



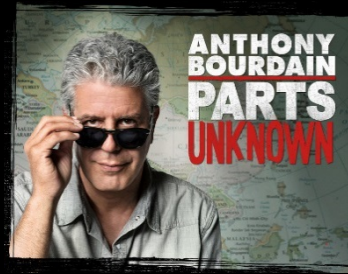
CNNgo / TVE
Authenticated TV

Currently on
**CNN US desktop
web site and
mobile apps.**



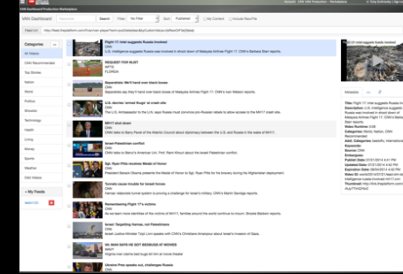
**Video
On-Demand**

Including CNN
US and
International
web and apps



Live Events
Planned & BN

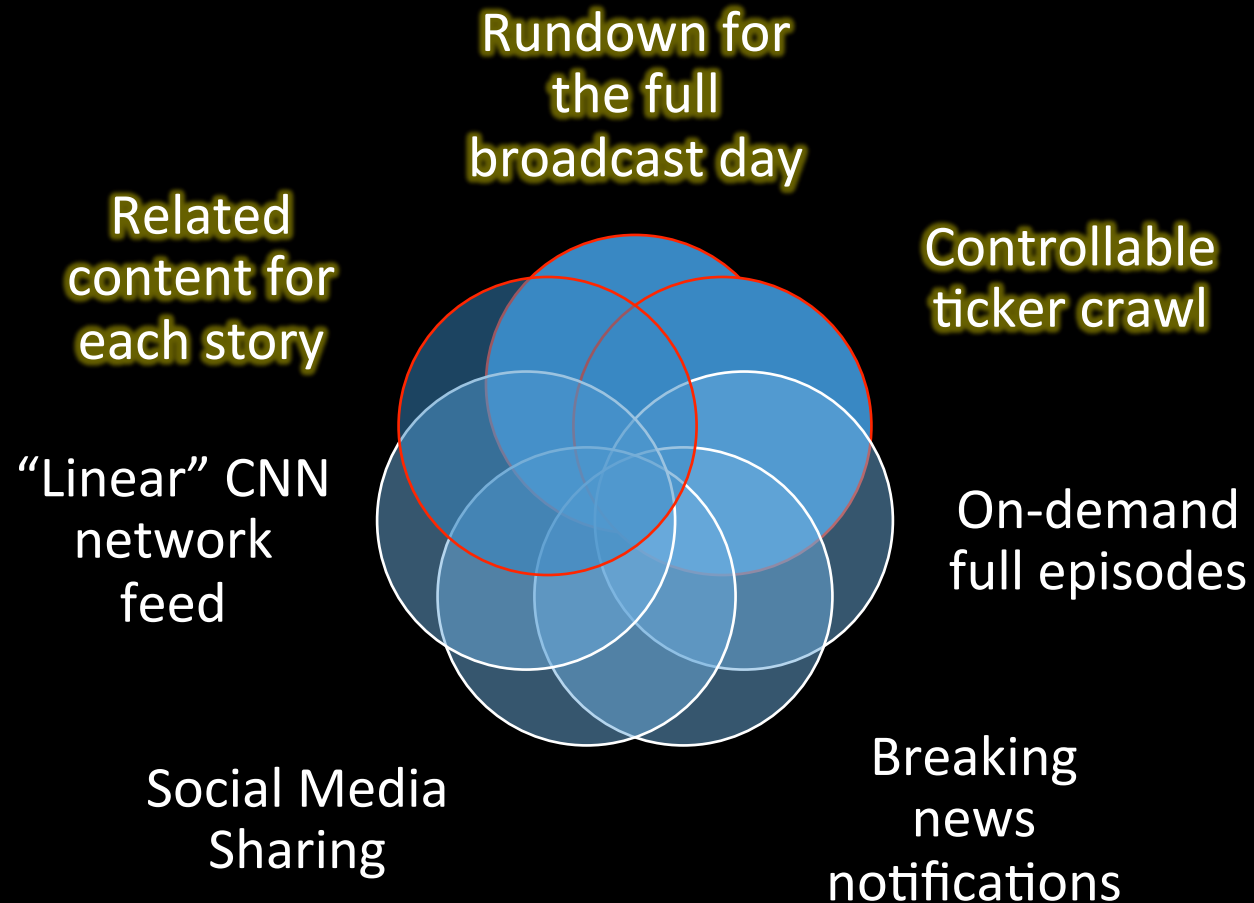
From Bourdain
to Boston, these
are planned and
breaking news
events across all
platforms



Syndication
Affiliate Content

CNN's video
affiliate and
syndication
network

What is CNNgo?



Walkthrough / Demo

The Thorny Problems

Security and authentication

- Video stream security
- Application access

Time markup

- Show boundaries
- Segment (story) boundaries

Related content

- Selection
- Curation

Synchronization

- Video
- Data

Video origination

- Ticker
- Ancillary components

Security and Authentication

Video streams are AES-128 encrypted and played via Turner's Core Video Player

Uses industry-standard TV-Everywhere authentication based upon OATC Standards

Server-side access is restricted by short-lived authorization tokens

Time Markup

Show boundaries

- Shows don't necessarily begin at their scheduled time
- Show start is a function of the live control room

Segment (story) boundaries

- The CNNgo producer tags the start of each story.

Related Content

Multiple content sources

- CNN.com
- CNNMoney.com
- Bleacher Report (sports)
- Social Media
- Others

Multiple content types

- Articles
- Videos
- Images
- Image Galleries
- Social Media Content
- Interactive Content

Data and Video Synchronization

Video

- Time from master control is inserted into the video stream
- Television ad breaks are tagged for downstream dynamic ad insertion

Data

- All data related to the content is time stamped

But...

- Video doesn't arrive in the client applications concurrent with the associated data
- Data generally leads video by 10-40 seconds

Video Origination

Video stream includes:

- Most downstream graphics from the TV feed
- Closed Captioning
- Nielsen watermarking

CNNgo doesn't use the TV on-screen ticker

- The ticker is removed and replaced with clean program video

Architectural Overview

Native implementations for each platform

IOS (Ipad)

Web

Set top boxes

Key integrations

Avid Inews editorial tools

CNN's Digital CMS

Core Video Player